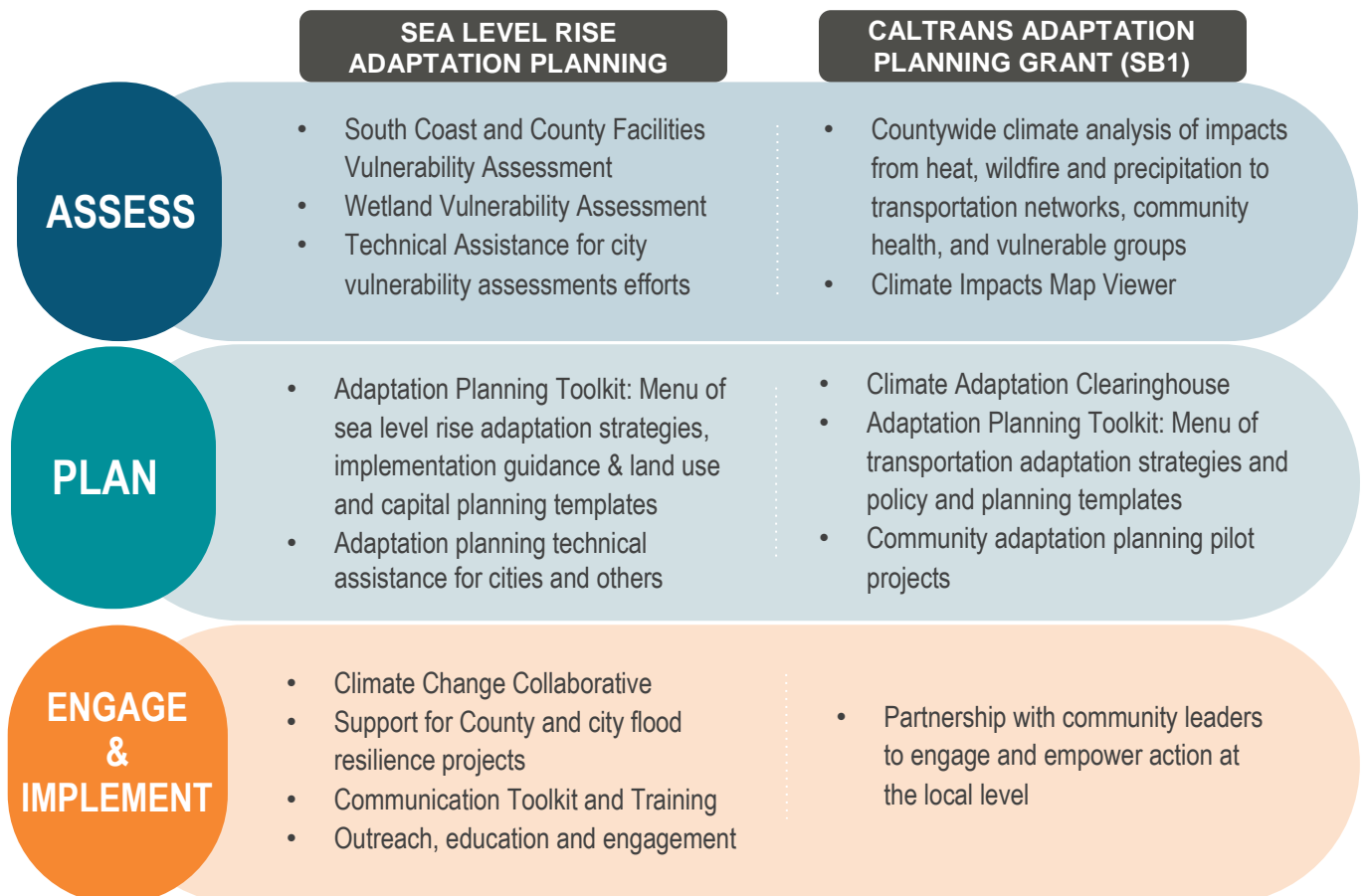


# San Mateo County Climate Change Preparedness Action Plan

## Overview and Goals

In March 2018, the San Mateo County Board of Supervisors approved the Sea Level Rise Vulnerability Assessment and directed staff to continue to assist the County and cities in preparing for the impacts of sea level rise, and to evaluate risks from other climate change impacts, including heat, wildfires, changing precipitation patterns and severe storm events. Based on feedback from Sea Change SMC stakeholders, the County developed the following next steps, which together form the Climate Change Preparedness Action Plan. The Action Plan contributes to reducing community-level risks by achieving the following goals:

- **Coordination and Collaboration:** Bring together County, cities, and other key stakeholders and leaders to foster information sharing, learning, coordination and partnerships.
- **Understand Risks:** Assess vulnerability to climate change impacts and identify and prioritize solutions to protect communities.
- **Mainstream Adaptation Planning:** Integrate adaptation planning into County plans, policy, operations, and decision-making and provide technical assistance and resources to cities.
- **Increase awareness:** Increase the understanding and awareness of sea level rise and climate change impacts and issues among elected officials, city and county staff, key stakeholders and community members.



# San Mateo County Climate Change Preparedness Action Plan

## ASSESSMENT

Actions	Lead/Partners	Timeline
<b>South Coast Vulnerability Assessment:</b> Understand risks from sea level rise for the South Coast of the County (Half Moon Bay south).	County of San Mateo	Jan 2019 - ~Dec 2020
<b>County Facilities Risk Assessment:</b> Assess climate risks to a range of County facilities and prioritize facility-specific adaptation strategies.	County of San Mateo	June 2018 - 2019
<b>Wetland Vulnerability Assessment:</b> Improve understanding of how wetland and tidal marsh habitats along Bayside San Mateo County will be affected by sea level rise.	Point Blue Conservation Science	Aug 2017 - Sept 2018
<b>Countywide Climate Analysis:</b> <ul style="list-style-type: none"> <li>- Analyze local vulnerabilities to multiple climate hazards including extreme heat, change in precipitation, wildfire risk, and floods.</li> <li>- Identify climate change impacts to critical transportation infrastructure (roads, railways, bikeways, trails, ports, airports, etc.), and public health facilities.</li> <li>- Assess community vulnerability to climate change impacts, including impacts on public health, mobility and emergency response needs of disadvantaged and transit-dependent populations.</li> </ul>	County of San Mateo/ Cities and other stakeholder groups/ Consultant Team	May 2019 - Feb 2020
<b>Technical Assistance:</b> Support city-specific sea level rise and climate change vulnerability assessments efforts.	Cities/County of San Mateo	Ongoing

## PLANNING

Launch an <b>Adaptation Clearinghouse</b> as a resource on climate change adaptation which includes an online GIS <b>Climate Impacts Map Viewer</b> showing climate impacts and research and technical studies.	County of San Mateo	2018 and Ongoing
Develop <b>Adaptation Planning Toolkits</b> to help the County and cities identify, prioritize, and mainstream sea level rise and climate change adaptation strategies (meet requirement of SB 379): <ul style="list-style-type: none"> <li>- Implementation Guidance including goals, vision, principles, climate risk projections, planning horizons and decision making and evaluative criteria for sea level rise and other climate change impacts.</li> <li>- Menu of adaptation strategies to address sea level rise, flooding and other climate change impacts.</li> <li>- Model adaptation policies and planning templates for inclusion in land use, climate and capital plans, development standards, investment decisions, and operations.</li> </ul>	County of San Mateo/ Cities and public agency partners/ San Francisco Estuary Institute/ Natural Capital Project at Stanford/ Consultants	Fall 2018-2019
<b>Technical Assistance:</b> Provide technical assistance and consultant support to cities to advance sea level rise and adaptation planning.	County of San Mateo	June 2018 - Dec 2019

## San Mateo County Climate Change Preparedness Action Plan

<i>Actions</i>	<i>Lead/Partners</i>	<i>Timeline</i>
<b>Community Adaptation Planning Pilot:</b> partner with and provide consultant support to 3-4 communities to develop neighborhood or community specific adaptation project concepts for building community resilience in disadvantaged or transit-dependent communities.	County of San Mateo	June 2019 - Feb 2020
<b>ENGAGEMENT &amp; IMPLEMENTATION</b>		
<b>Launch a Climate Collaborative</b> for government staff, elected officials, and community stakeholders to learn, share information, network, coordinate and partner on projects through convenings and City/County working groups.	County of San Mateo/ Cities/ Other partners	Fall 2018 - 2019
<b>Outreach, Education and Engagement Efforts:</b> <ul style="list-style-type: none"> <li>- Sea Level Rise Road Show: Presentations to City Councils and Community groups.</li> <li>- Youth Exploring Sea Level Rise Science Program to engage high school students in climate change solutions.</li> <li>- King Tides Tours and Shrinking Shores demonstration projects to help visualize future flooding and sea level rise risks.</li> </ul>	County of San Mateo	Ongoing
Support <b>County Flood Resilience Efforts:</b> Bayfront Canal/Atherton Chanel Flood Management, Navigable Slough Feasibility, Belmont Creek Watershed Management.  Support <b>City, Multi-jurisdictional and Regional efforts:</b> Foster City Levee Project, SAFER Bay, South-Bay Salt Pond Restoration Project, Adapting to Rising Tides Transportation Assessment, etc.	County of San Mateo Public Works/Office of Sustainability  Cities/Regional Partners	Ongoing  Ongoing
Develop a <b>Communication Toolkit and Training</b> to support stakeholders in framing and communicating information about sea level rise and climate change.	County of San Mateo/ Catalyst Inc.	June 2018 - Dec 2018
<b>Partnerships with Community Leaders</b> to develop a community engagement and capacity building model that empowers vulnerable community members to engage and empower action on climate adaptation at the local level.	County of San Mateo/ Community leaders	Fall 2018- 2019